



**Excellence Technology Quality Pioneer**

# PRODUCT

Purchasing Handbook

Golden Supplier of

Truck scale    Floor scale    Bench scale    Pallet scale    Wheel scale    Vet scale

*[www.lilascale.com](http://www.lilascale.com)*

**CHANGZHOU LILANG ELECTRONIC CO., LTD.**

## INTRODUCTION

Changzhou Lilang Electronic Co., Ltd., which is a company specialized in weighing equipment, is established by professional experts from weighing field. It is a high-tech company specialized in scale business, and all the professional technicians have the experience of more than decades of years in the scale business. Our products include almost all the industrial scales, as truck scales, floor scales, bench scales, buffer scales, axle scales, cylinder scale, cattle scale and pallet scale and so on.

Changzhou Lilang Electronic Co., Ltd. is located in Changzhou, with convenient traffic it is the center of Yangtse Delta and the center between Nanjing and Shanghai. Our company is about 2 hours drive from Shanghai. We have established mature sales and distributing agents all over the country, and all the salesman and distributors have the ability of service and technical support. They are ready to provide the customer before and after sales service. Currently, our products have been exported to several decades of countries, and well sold in European, American, Asian, and African countries. The products are fully appraised by the customers.

In order to meet the changing demands of the customers and market, our R&D department is always developing new products, and almost all the new products are accepted and favored by the customers. We are always aiming at the market when we are developing new products.

To provide you our best quality, best service is always our promise. Honesty is the main theme of our company. We hope you can always feel that we are thinking of you. We always try to lead the market in the competitive scale market, as we are always innovating and surpassing on the basis of demands from the customer, enquires of the market and the people oriented.

If you are a distributor, it will be your wisest choice to select us. If you are a purchaser from overseas, don't hesitate any more, we are your best partner and choice from China.

Lilang----- For creating scale prestige.



## DIRECTORY

### 1 Truck Scale

Lion series truck scale

Puma series truck scale

GAB series truck scale

Modular series truck scale

Tiger series truck scale

Smart moveable truck scale

Puma-C concrete truck scale

Lion-C concrete truck scale

### 2 Axle Weighing scale

Axle Scale

Portabe long Axle weighing scale

Portabe wheel pad.

### 3 Floor Scale

### 4 Pallet Scale

### 5 FC Series Cattle Scale

### 6 Vet Scale

### 7 Cylinder Scale

### 8 Buffer scale

### 9 Bench Scale

EA series bench scale

EB series bench scale

Scuba series bench scale

Dingo series bench scale

### 10 Crane Scale

# ■ Truck scale

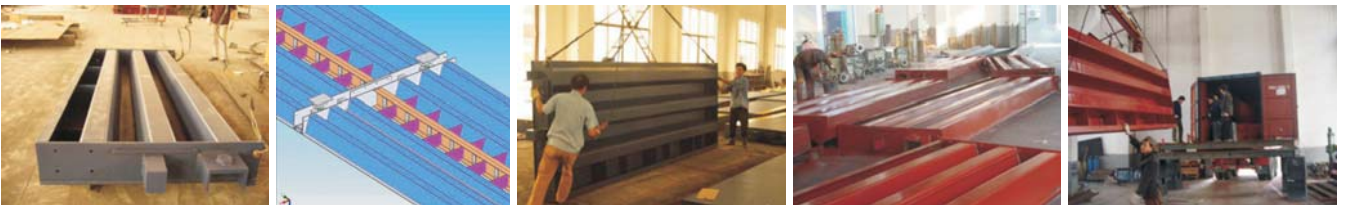
## Lion Series truck scales

### Features:

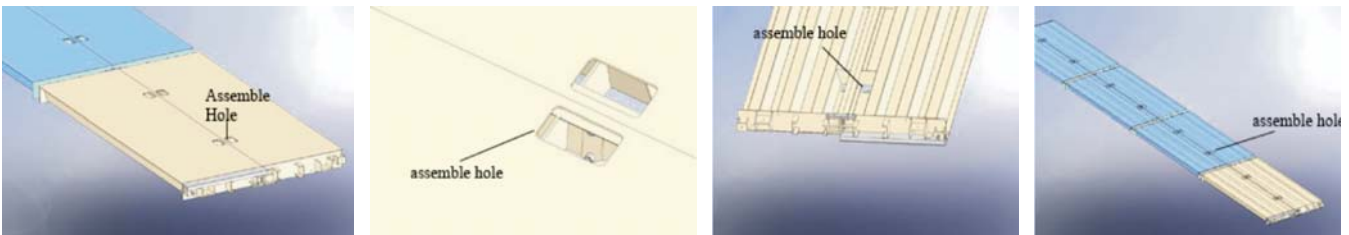
1. For saving your freight charge, we are able to put 3 pcs 3X18m Lion Series truck scales into a 40 feet container.



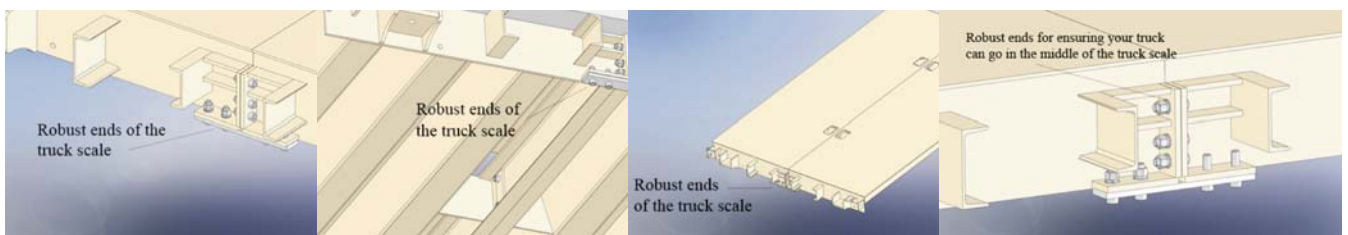
2. Unlike those low quality Chinese manufacturers, standard Lion Series truck scale from Lilascale is always using 6 U beams and thus ensuring that the structure of the truck scale will not bend and it will never have pit in the middle of the truck scale. But for your choice, we keep the cheap type truck scale available for your economical choice.



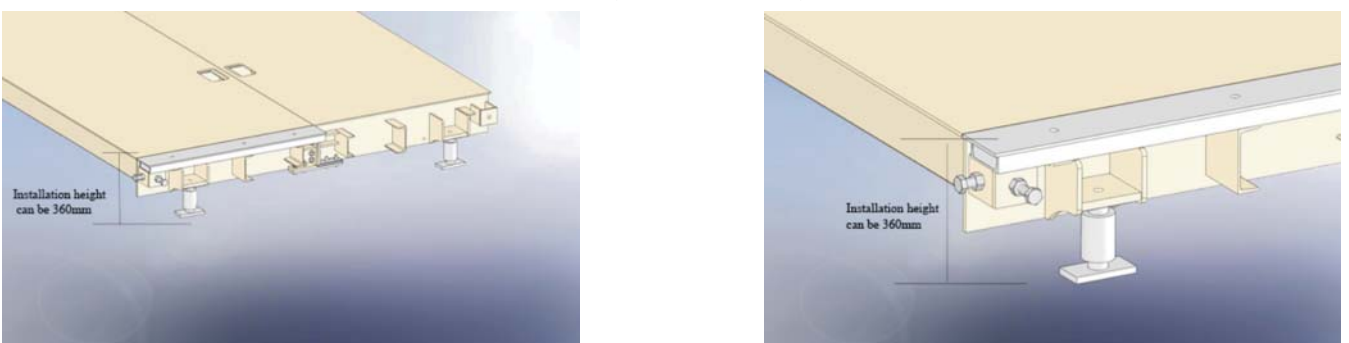
3. You have to turn the 3m wide truck scale upside and down for assembling of the truck scales from other Chinese manufacturers. While the Lion Series truck scale from Lilascale is specially made with assembling holes on top of the platform, so that you don't have to turn the truck scale upside and down for assembling and thus saving your money for hiring big cranes and insurance cost for your staff.



4. Almost all Chinese manufacturers will not allow your truck to go in the middle of this standard series truck scale, while we allow you to do this on the truck scales from Lilascale sometimes. And we are sure it will be no problem, because we have too strong transverse plates of the Lion series truck scale



5. All this standard truck scale from China will have the mounting height with load cell from 400mm ~450mm high, this will make your truck driver frightened. But with your requirement, Lilascale will be able to make the Lion Series truck scale into the lowest installation height of 360mm high.



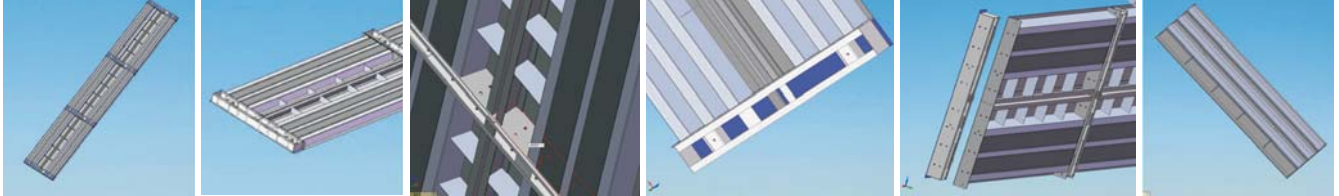


# Puma Series truck scales

## Features:

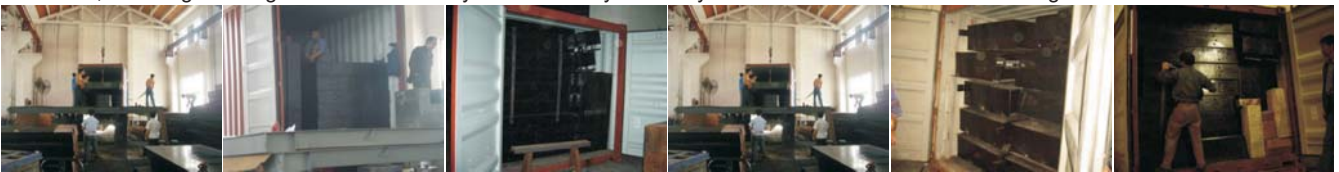
### 1.What is the structure of Puma Series truck scale?

Puma Series is newly developed by our smart engineer accordingly to the most popular structures from Europe. And it keeps the great heritage of our company and European quality standard. We named it Puma, because it is very flexible and robust, with the features of easy mounting and economical transportation cost and so on. It is with special "box" for connecting the scale bodies, and thus making everything easier for the European customers.



### 2.Are you still worried about the shipping cost to Europe? Puma will tell you, Never!

Puma Series is using very thick but low U beam structure, and its special design and structure decides that you can put 2 pcs 3X18m Puma series into a 20 feet container. While other companies are still worried about how to put 2 pcs 3X18m into a 40 feet container, the freight charge Puma saved for you will allow you to buy another truck scale from China again.



### 3.Is it very hard to install all the truck scales from China? All need big cranes? Puma says no!

The smart structure of Puma is original from Europe and thus the installation is easy and convenient and saving a lot of Euros on labor cost and cost for hiring big cranes. You can easily install the Puma series truck scales by only a forklift. The position stopper we used for installation the truck scale will let you easily have the position of installing the truck scale. You will never need to turn the truck scale wholly upside and down.



### 4.You have 3X18m truck scale in stock, but the customer needs a 3X16m truck scale tomorrow.

**What can you do? To buy another one from China tomorrow? Puma will solve this for you.**

Puma series truck scale is manufactured by moulds. This means all scale body will be able to match to any others, so it will be much easier for the customers to stock the truck scales. You don't need to stock 3X18m truck scale or 3X16m truck scale, for option you need only to stock the scale body 3.5m, 4.5m and 5.5m long and stock some " box " which is normally 0.35m long, and thus you can match to any truck scale sizes you need. But be careful of the Max. Capacity, only similar capacity scale bodies can match together.

### 5.Are you still looking for portable truck scales from China? Nobody can supply that? You missed Lilascale and our Puma series.

As Puma series from Lilascale is structured with special " box " structure and the load cell is installed in this box. We can easily place a 20mm thick plates under the load cell, thereafter no foundation will be needed. Of course this portable truck scale should be placed on thick concrete road floor. After used for a while, you can easily move it to another place for short time use again.



### 6.Do you think the labor cost for installing a weighbridge in your country is too expensive? Let Lilascale and our Puma series truck scale do this for you.

If you buy the plates under the load cell from us, we will be able to install the load cells in our factory. This will save a lot of your labor in your country, as you only need to bolt the scale body and calibrate. There is no need for your worker to install the load cells and do the lightening protection wire, all these will be done in Lilascale. Stoppers are done in Lilascale factory too.



# GAB Series truck scales

## Features:

### 1.What is the structure of GAB Series truck scale?

GAB series truck scale is designed by the special requirement from customers from Europe. As it is open in the middle of the truck scales, so the users can clean the underneath of the truck scales casually. GAB is also easy for mounting and economical in transportation cost. It is with special "box" for connecting the scale bodies and making mounting of the truck scale easy for the distributors.



### 2.GAB saves your sea freight charge importing from China comparing to other truck scales

Gab is only 1.1m wide in scale body, so it is possible to put more scale bodies in the container. So, we are able to put 2 pcs 3X18m GAB series truck scale into a 20 feet container.

Other companies are still worried about how to put 2 pcs 3X18m into a 40 feet container, the freight charge GAB saved for you will allow you to buy another truck scale from China again.



### 3.A forklift will easily help you to install the GAB truck scale

The smart structure of GAB is original from Europe and thus the installation is easy and convenient and saving a lot of Euros on labor cost and cost for hiring big cranes. You can easily install the GAB series truck scales by only a forklift. The position stopper we used for installation the truck scale will let you easily have the position of installing the truck scale. You will never need to turn the truck scale wholly upside and down.



### 4.You have 3X18m truck scale in stock, but the customer needs a 3X16m truck scale tomorrow. What can you do? To buy another one from China tomorrow? GAB will solve this for you.

GAB series truck scale is manufactured by moulds. This means all scale body will be able to match to any others, so it will be much easier for the customers to stock the truck scales. You don't need to stock 3X18m truck scale or 3X16m truck scale, for option you need only to stock the scale body 3.5m, 4.5m and 5.5m long and stock some " box " which is normally 0.35m long, and thus you can match to any truck scale sizes you need. But be careful of the Max. Capacity, only similar capacity scale bodies can match together.

### 5.GAB truck scale provides another good solution for portable truck scale.

GAB series truck scale from Lilascale is also structured with special " box " structure and the load cell is installed in this box. We can easily place a 20mm thick plates under the load cell, thereafter no foundation will be needed. Of course this portable truck scale should be placed on thick concrete road floor. After used for a while, you can easily move it to another place for short time use again.



### 6.Do you think the labor cost for installing a weighbridge in your country is too expensive? Let Lilascale and our GAB series truck scale do this for you.

If you buy the plates under the load cell from us, we will be able to install the load cells in our factory. This will save a lot of your labor in your country, as you only need to bolt the scale body and calibrate. There is no need for your worker to install the load cells and do the lightening protection wire, all these will be done in Lilascale. Stoppers are done in Lilascale factory too.





## Modular Series Truck Scales

Modular series is a heavy duty structure our company suggested for the overseas customer. This structure is very suitable for heavy duty environment. The advantage of this structure is it is easy in shipping and high strength of the structure, and it is suitable for short axle truck. One 40 feet container can put 3pcs 3X18m of Modular series truck scales. The following picture is the modular series truck scale we made for Australia.



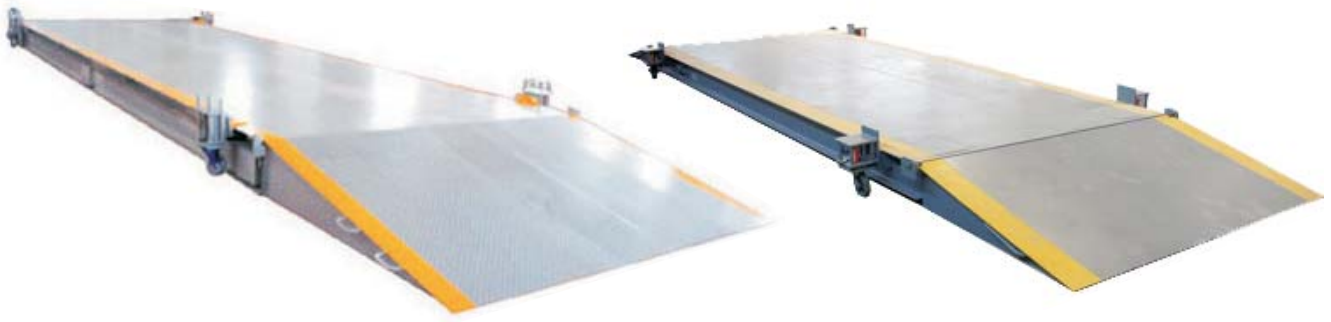
## Tiger series truck scale

Tiger series truck scale is designed by us for extremely heavy duty truck scales used in quarry or other ruff conditions.

This structure assures that you are owning the most strong scale body with lowest cost you need to pay. The following picture is the tiger truck scale we made for USA



## Smart moveable truck scale



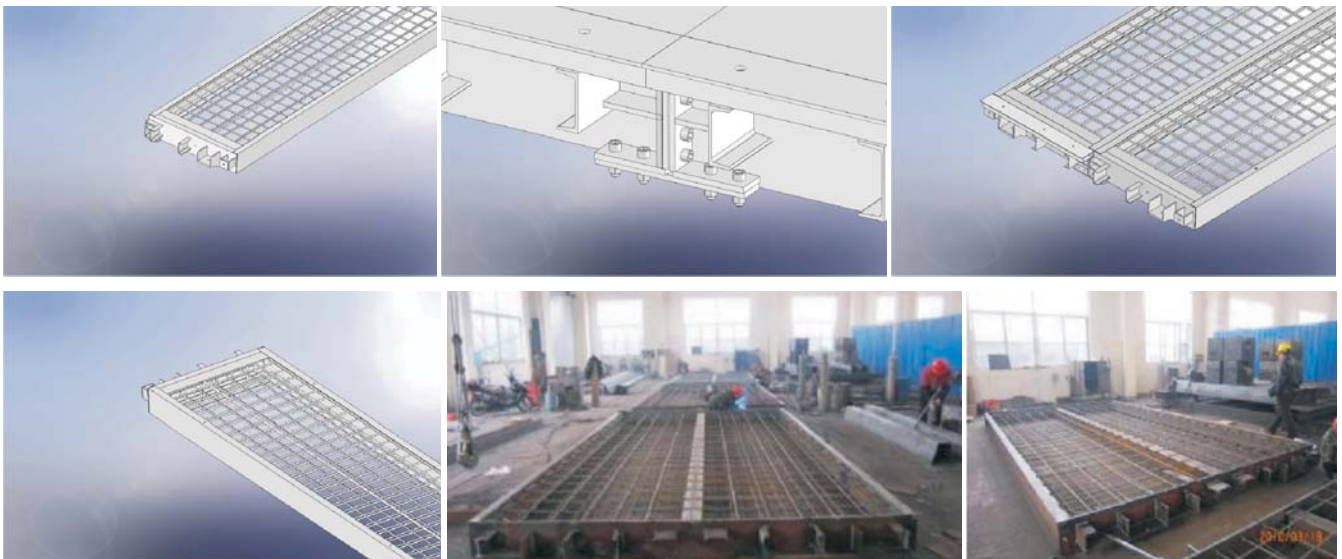
1. Ultra-low design of scale body exterior, elastic, anti-seismic and shock-resistant
2. With integrated design of slope and scale body and proper slope angle, trucks can easily move onto the platform for weighing.
3. With special guiding system of hydraulic lift and heavy-duty universal movable wheels, the scale body can move easily.
4. Maximum moving speed at 20m/min. After moving to a desired position, it takes only 10 minutes to be adjusted to working state.
5. High accuracy weighing load cells
6. Size from 2X4m to 3X9m

## LION-C truck scale

### Features:

Lion-C Series concrete truck scale is originated from our Lion series steel deck truck scale by the innovation of our smart engineer. Our Lion-C series concrete deck truck scale keeps the following advantage comparing to other truck scale manufacturers in China.

1. We are able to put 3 pcs 3X18m Lion-C Series truck scales into a 40 feet container for saving your freight charge.
2. Almost all Chinese manufacturers will not allow your truck to go in the middle of this standard series truck scale, while we allow you to do this on the truck scales from Lilascale sometimes. And we are sure it will be no problem, because we have too strong transverse plates of the Lion-C series truck scale
3. All this standard truck scale from China will have the mounting height with load cell from 400mm ~450mm high, this will make your truck driver frightened. But with your requirement, Lilascale will be able to make the Lion-C Series truck scale into the lowest installation height of 360mm high if it is needed.





# Puma-C Series truck scales

## Features of Our Puma-C Series concrete truck scale

Our company is specialized in exporting concrete truck scales, as we do everything on the concrete truck scale including welding and mesh, and the customer only needs to pour the concrete and install the truck scale on site. There is no more labor needed. This is very labor saving for the European and American customers

### 1、Is it worthwhile to purchase concrete truck scales

Yes, it is very good price and very good quality.

### 2、How is the quality of Puma-C concrete truck scale?

Our standard Puma Series concrete truck scale is using national standard 220mm high C channel as the main beam of the concrete truck scale. We are using 4pcs C channel in one section of the truck scale. Thus the strength of the structure will be promised after the concrete poured. Also, we are welding two layers of mesh in the frame, much better quality comparing to others using only one layer of mesh.

### 3、Do we still need a lot of labor work on the structure after imported from Lilascale?

No! Labor cost and material is very costly in Europe and American countries. So, it is very costly if the concrete truck scale still needs labor work after imported. Other factories' concrete truck scale will only send you the frame, but will need you to weld all the steel bar ( mesh ) into the structure, this will cost too much material and labor cost. So, it is not worthwhile. But unlike other Chinese manufacturer, Puma-C concrete truck scale from Lilascale will not need any labor cost after imported, as we weld all the steel bar into the structure and painted well.

### 4、Is it easy to install Puma-C concrete truck scale from Lilascale?

Yes! Puma-C series truck scale is very easy during installation and assemble. It is using special “ box” structure for installation. First pour the concrete into the frame of the module, after the concrete is dry, then assemble and install the weighbridge. No big cranes needed, a forklift will be enough.

### 5、How many pcs 3X18m Puma-C concrete truck scale into the container?

We can put 2pc 3X18m Puma-C concrete truck scale into a 20 feet container.





# ■ Axle weighing

## Axle scale

Axle scale is suitable for dynamic and static weighing. This product is combined by high precision load cell, indicator and short scale body. It consumes less land and can be static and dynamic. It is big screen, multiple ways of printing and self-diagnose. It is widely used in traffic, construction, source, environment protection, factory and mining field. It is accurate weighing, easy operation and easy maintenance. It weighs by adding the weight of the axle of the trucks and thus getting the weight of the whole cargo. It needs less space, and less construction and easy for moving.



**Size: 3.2m×0.9m×300mm 3.2m×2.2m×300mm**  
**Capacity: 25t,40t,60t**



## long axle weighing scale

Introducing Lilascale latest design of fully electronic, portable Axle Weigher. Designed and manufactured specifically to provide dependable, high accuracy axle and/or total vehicle weights. For optimum reliability and servicability these scales have no moving parts to wear out and spares are readily available.

- High Capacity Loadcells with 100% Overload Factor
- Loadcell Components Protected from Hazards
- Choose Between Galvanised or Paint Finish
- Portable Design - Can Be Moved Easily
- Low Profile Design (210mm High)
- Rechargeable Battery Operated
- Fast User Friendly Installations
- Heavy Duty Steel Construction
- Humidically Sealed Loadcells
- Digital Display Standard



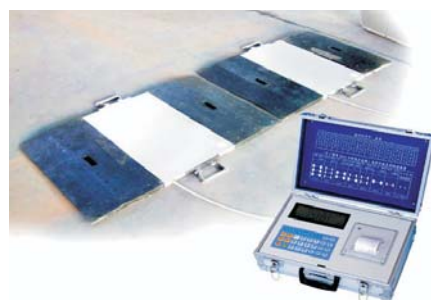
# Portable wheel scale

## Wireless Portable WIM System



## Features

1. The portability is largely increased.
2. Ultra high frequency ensures better anti-electromagnet ability.
3. Double LCDs are used.
4. Display date and time, truck no and ticket no are manually input. Battery voltage monitor is indicated and alarm can be generated.
5. Measure and display vehicle velocity(km/h).
6. Floating technology is adopted to remove zero drift.
7. Numbered options.
8. Vehicle axle weight is measured axle by axle, and the max number is unlimited.
10. Micro printer is embedded in the wireless instrument, the print ticket contains date, time, truck no, ticket no, axle weight, joint axle weight, truck weight, overload and executive organization.
11. RS232 port is used to communicate with PC.
12. Long life-span storage battery ensures long-time operation in field.
13. In static mode, customer and cargo no can be input.
14. Max stored records are up to 300, and can be expanded to 1000.



## Application

1. weighing and load control of loading truck in road transportation, construction, agriculture, forestry, and dustbin disposal.
2. weighing of loading truck by executive enforcement units
3. test weight and center of gravity of aero-plane
4. weighing automobile wheel and axle load distribution in automobile production line
5. stability test of special automobile, such as fork-lift truck, crane

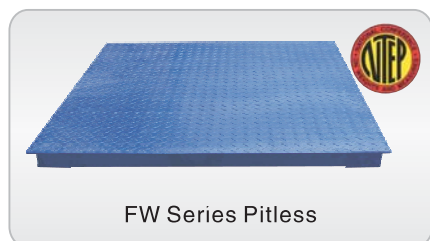
## Main Technical Index

1. Weigh pad
  - i. dimension: 800×350×22mm
  - ii. weight: 28kg
  - iii. height: 22mm
- a) dimension: 430×335×190mm
- b) weight: 10kg
- c) wheel weighing span: 0~20T
- d) axle weighing span: 0~40T
- e) total weighing span: 0~200T
- f) axle weight display: 0~99995kg
- g) total weight display: 0~999995kg
- h) display unit height: 13mm
- i. 128×64 dot matrix display, 16 pages of functional options
- ii. 24 bit high-conversion ADC, conversion velocity is up to 1000/s
- iii. analogue conversion division: 0.5uV
- i) accuracy
  - i. static( for reference)
    - 1) ① ≤20%FS, ±0.3% F.S
    - 2) ② >20%FS, ±0.5% F.S
  - ii. dynamic(<15km/h)
    - 1) ① ≤20%FS, ±1% F.S
    - 2) ② >20%FS, ±3% F.S
3. vehicle moving velocity: 0~15km/h
4. weighing pad power supply: 6V DC, 1A
5. operation temperature: -10℃~60℃
6. relative humidity: 90%

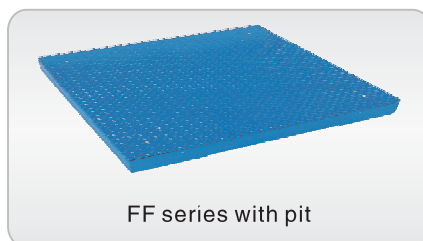




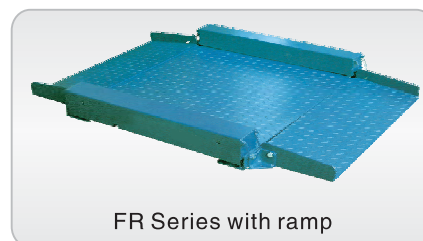
# ■ floor scale



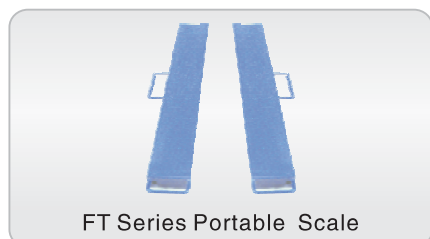
FW Series Pitless



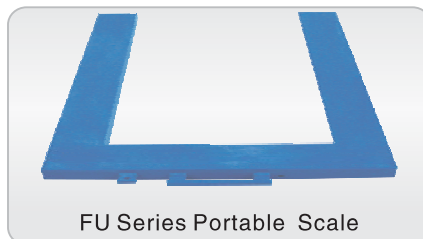
FF series with pit



FR Series with ramp



FT Series Portable Scale



FU Series Portable Scale



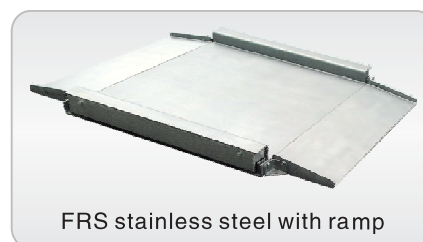
LWS series washable floor scale



FWS stainless steel Pitless



FFS stainless steel with pit



FRS stainless steel with ramp



NTEP approved

[http://www.ncwm.net/sites/default/files/certificate\\_files/10-060.pdf](http://www.ncwm.net/sites/default/files/certificate_files/10-060.pdf)

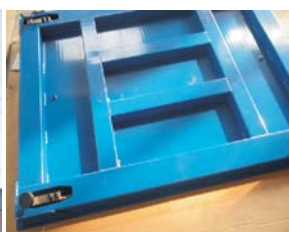


## Specifications for reference

Model	Max.cap.	Div.	Platform Size
0808-1	1t	0.5kg	0.8×0.8m
0808-2	2t	1.0kg	0.8×0.8m
0810-1	1t	0.5kg	0.8×1.0m
0810-2	2t	1.0kg	1.0×1.0m
1010-2	2t	1.0kg	1.0×1.0m
1012-1	1t	0.5kg	1.0×1.2m
1012-2	2t	1.0kg	1.0×1.2m
1012-3	3t	1.0kg	1.0×1.2m
1212-1	1t	0.5kg	1.2×1.2m
1212-2	2t	1.0kg	1.2×1.2m
1212-3	3t	1.0kg	1.2×1.2m
1215-1	1t	0.5kg	1.2×1.5m
1215-2	2t	1.0kg	1.2×1.5m
1215-3	3t	1.0kg	1.2×1.5m
1215-5	5t	2.0kg	1.2×1.5m
1515-3	3t	1.0kg	1.5×1.5m
1515-5	5t	2.0kg	1.5×1.5m

- ★ High precision load cell
- ★ Heavy Duty Scale Body
- ★ Checker plate optional ( less than 1.2m wide )
- ★ Stainless steel indicator for stainless scale body
- ★ Auto tare
- ★ Overload warning
- ★ Speedy weighing
- ★ Good stability
- ★ Printer is optional

Model example: FW1212-3, FFS1215-2, FR1010-1 and so on



floor scale- back



FW series,without frame,back

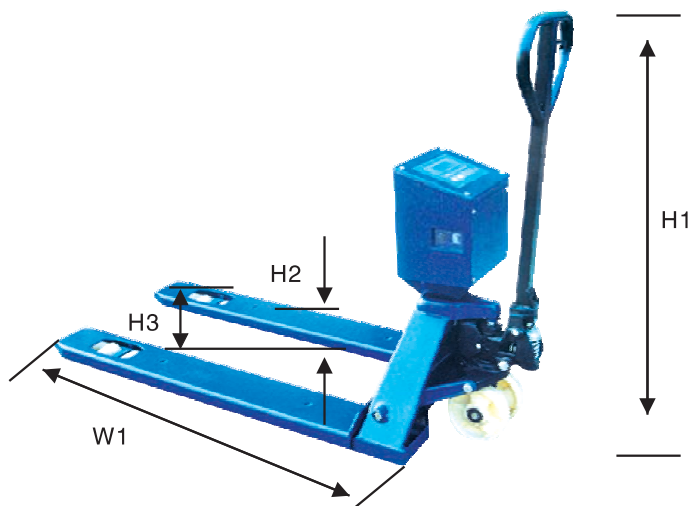


u beams

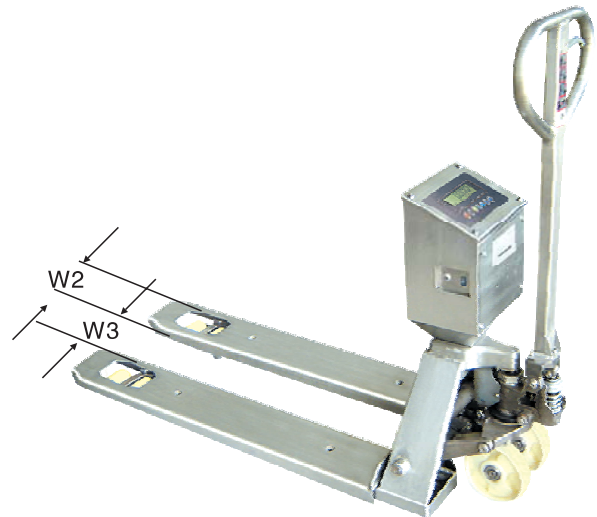


weigh beams

## ■ Pallet scale



TA series carbon steel pallet scale



TB series stainless steel pallet scale

### Main Features:

- ※ With all the functions of pallet truck
- ※ Special Nylon wheels
- ※ 6digits LCD display ( LED is optional )
- ※ Stainless steel is specialized in food industry
- ※ Specification: 1000kg × 0.5kg, 2000kg × 1.0kg

### Size Explanation:

Code	Explanation	Size
H1	Handle Height	1120
H2	Pallet lowest height	85
H3	Pallet lifting height	200
W1	pallet length	1180
W2	pallet width	180
W3	Width between Pallets	180 ( EU Size ) 340 ( American Size )





## ■ FC Series Cattle scale

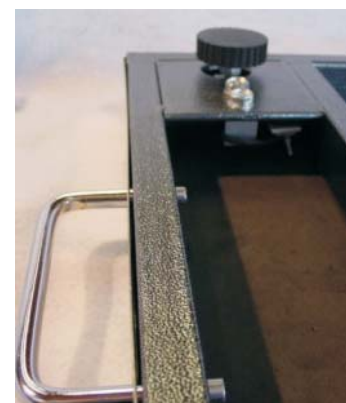
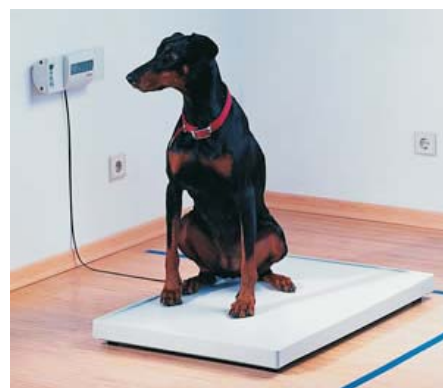
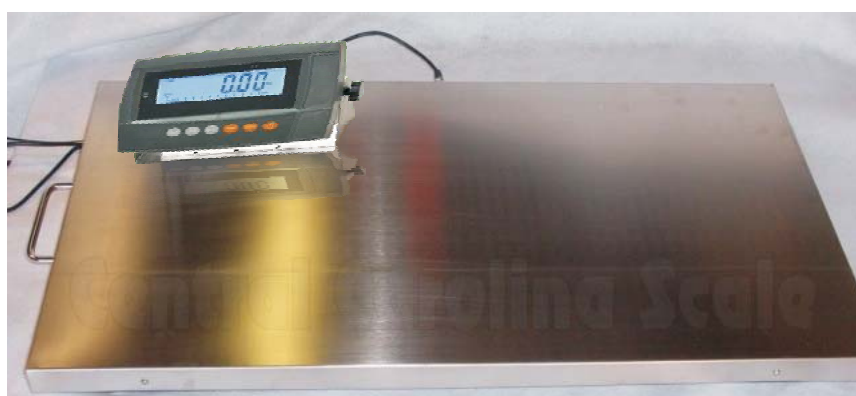


Our cattle scale bears strong scale body and fence, easy for weighing all kinds of animals

Model	Platform Size (m)	Capacity(t)
FC1520-3	1.5X2.0	3
FC2030-3	2.0X3.0	3
FC2040-3	2.0X4.0	3
FC2040-5		5
FC2040-10		10

Can make special size platform

## ■ Vet Scale



Capacity: 220 lbs (100 kg)

Graduations: 100kgX50g

Tare Range: 100 kg / 220 lbs

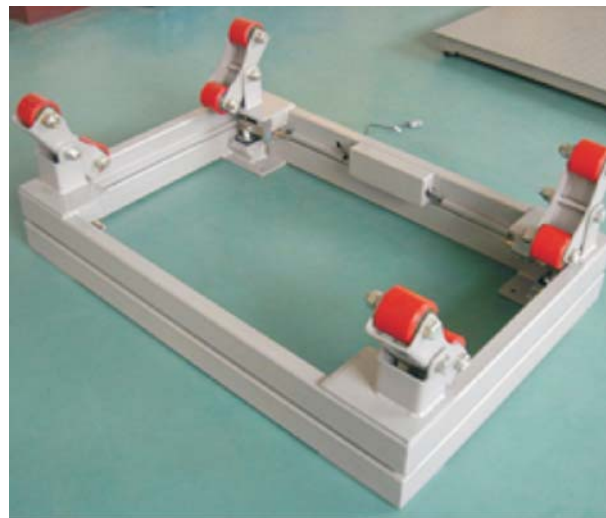
Platform: 35.5" x 3" x 23.6"

Power: 6 batteries and AC adapter

Functions: Tare, Auto hold, Dampening, kg/lb switchable

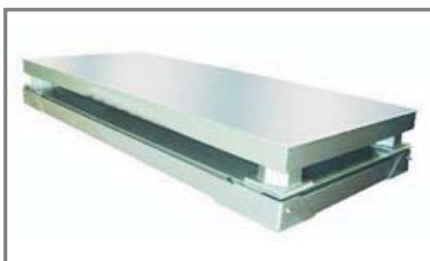


## ■ FG Series Cylinder scale



Model	Platform Size (m)	Capacity (t)
FG0812-2	0.8X1.2	2

## ■ FB Series Buffer scale

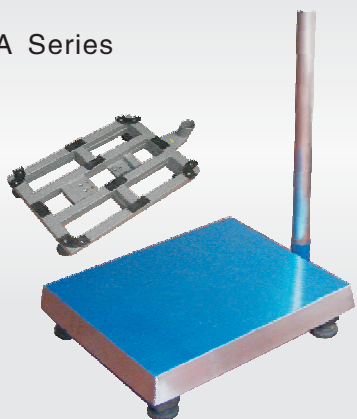


Model	Platform Size (m)	Capacity (t)
FB1212-5	1.2X1.2	5
FB1515-5	1.5X1.5	5
FB1515-10		10
FB1520-10	1.5X2.0	10
FB1520-20		20
FB2020-10	2.0X2.0	10
FB2020-20		20

Heavy duty scale body, suitable for weighing of bumping products  
 High strength spring, can stand high bumping  
 Can make special size platform

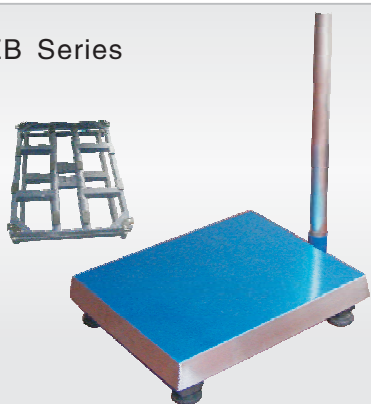
## ■ Bench Scale

EA Series



Model	Max.Cap.	Platform size	Feature
EA3030	30-50kg	300X300mm	Steel pipe welding Stainless steel platform optional Heavy duty powder coated scale body overload and side loading protection LED or LCD display
EA3040	50-100kg	300X400mm	
EA4050	50-150kg	400X500mm	
EA4560	150-300kg	450X600mm	
EA5070	150-500kg	500X700mm	
EA6080	150-500kg	600X800mm	

EB Series



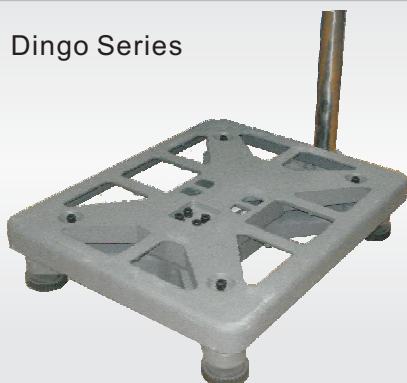
Model	Cap.	Platform size	Feature
EB6080-600	600kg	600 800mm	Round steel pipe welding Carbon steel or stainless steel platform heavy duty powder coated scale body overload and side loading protection LED or LCD display
EB6080-1000	1000kg		
EB8080-600	600kg	800 800mm	
EB8080-1000	1000kg		
EB8010-600	600kg	800 1000mm	
EB8010-1000	1000kg		

Scuba Series bench scale



Model	Platform Size	Feature
SC4050	400X500	Mould robust scale body One punching structure Easy in mounting

Dingo Series



Model	Capacity	Platform Size	Feature
DG4050	30-150kg	400X500	Aluminium light scale body One type shaping pouring structure Nice appearance
DG4560	150-300kg	450X600	

# Crane Scale

## Direct crane scale [Model: HA]

### Main Data

Standard	According to OIML class III
Display	30mm (1.2") 5digits LCD/LED
Zero Range	4% F.S.
Tare Range	20% F.S.
Stable Time	=10 seconds
Overload Indication	100% F.S. + 9e
Max. Safety Load	125% F.S.
Ultimate Load	400% F.S.
Battery Life	=70 hours
Battery Type	Fully sealed Lead-Acid battery, 6V/7Ah
Adapter	DC9V/1000mA
Operating Temp.	- 10°C ~ + 40°C
Operating Humidity	=85% RH under 20°C
Remote Controller Distance	Min. 15m
Battery of Remote Controller	UM-4 SIZE AAA , 1.5Vx2

### Features

- Multi-weighing units: Kg, lb, N are selectable, generally kg are default unit.
- Multi-function operation: Tare; Zero; Auto zero tracking; Total; Hold; Overload warning and record, Calibration through remote controller, Etc functions.
- User-friendly design: Cast aluminium housing for maximum protection; Large red 5 digit LED display (digit height 30mm); Gravity compensation; Safety factor up to 4 times capacity; Battery Operated with low battery indication; Automatic turn off , power-saving function.



### Product Specification

Model	Capacity	Mini.cap	Division	Number
HA-1	1000	10	0.5	2500
HA-3	2000	20	1	2000
HA-3	3000	20	1	2000
HA-5	5000	40	2	3000
HA-10	10000	100	5	2500
HA-15	15000	100	5	2000
HA-20	20000	200	10	2000

## Portable crane scale [Model: HM]

### Main Data

Standard	OIML class III
Display	30mm (1.2") 5digits LCD/LED
Zero Range	4% F.S.
Tare Range	20% F.S.
Stable Time	=10 seconds
Overload Indication	100% F.S. + 9e
Max. Safety Load	125% F.S.
Ultimate Load	400% F.S.
Battery Life	=50 hours
Battery Type	Fully sealed Lead-Acid battery, 6V/5Ah
Adapter	DC9V/1000mA
Operating Temp.	- 10°C ~ + 40°C
Operating Humidity	=85% RH under 20°C
Remote Controller Distance	Min. 15m
Battery of Remote Controller	UM-4 SIZE AAA , 1.5Vx2

### Features

- Multi-weighing units: Kg, lb, N are selectable.
- Multi-function operation: Tare; Zero; Auto zero tracking; Total; Hold; Overload warning, Calibration through remote controller functions.
- User-friendly design: Cast aluminium housing and aluminium front panel for maximum protection; Large red 5 digit LED display (digit height 30mm); Gravity compensation; Safety factor up to 4 times capacity; Battery Operated with low battery indication; Automatic switch-off power-saving function.



### Product Specification

Model	Capacity	Mini.cap	Division	Number
HM-50	50	0.4	0.02	2500
HM-100	100	1.0	0.05	2000
HM-200	200	2.0	0.1	2000
HM-300	300	2.0	0.1	3000
HM-500	500	4.0	0.2	2500
HM-1000	1000	10.0	0.5	2000

# Crane Scale

## Direct crane scale [Model: HG]

### Main Data

Standard	According to OIML class III
Display	30mm (1.2") 5digits LCD/LED
Zero Range	4% F.S.
Tare Range	20% F.S.
Stable Time	≈10 seconds
Overload Indication	100% F.S. + 9e
Max. Safety Load	150% F.S.
Ultimate Load	700% F.S.
Battery Life	≈70 hours
Battery Type	Fully sealed Lead-Acid battery, 6V/7Ah
Adapter	DC9V/1000mA
Operating Temp.	-10°C ~ +40°C
Operating Humidity	≈85% RH under 20°C
Remote Controller Distance	Min. 15m
Battery of Remote Controller	UM-4 SIZE AAA, 1.5Vx2

### Features

- Special design: Used under high temperature environment. Especially in casting industry.
- Multi-weighing units: Kg, lb, N are selectable, generally kg are default unit.
- Multi-function operation: Tare; Zero; Auto zero tracking; Total; Hold; Overload warning and record, Calibration through remote controller, etc functions.



### Product Specification

Model	Capacity	Mini.cap	Division	Number
HG-1	1000	10	0.5	2000
HG-2	2000	20	1	2000
HG-3	3000	20	1	3000
HG-5	5000	40	2	2500
HG-10	10000	100	5	2000
HG-15	15000	100	5	3000

## Wireless crane scale [Model: HW]

### Main Data

Accuracy standard	According to OIML III
Safe load	125% F.S.
Ultimate load	400% F.S.
Stable display	3-5 seconds
Display	LCD with backlight
Operation time	50hours
Scale battery	7.2V/2.8Ah rechargeable battery
Indicator battery	6V/4Ah rechargeable battery
Operating temperature	-10°C ~ +40°C
Operating Humidity	< 85% RH at 20°C
Operation distance	200m in wide space

### Features

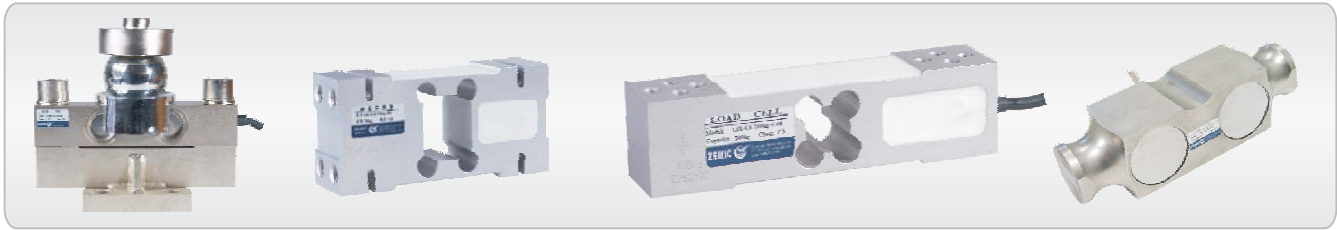
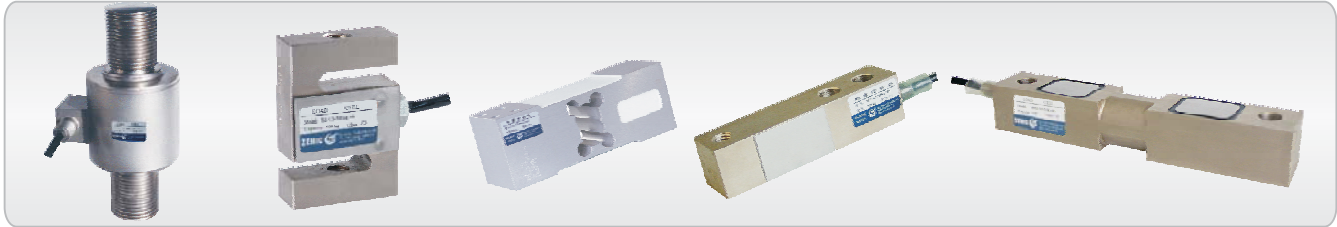
- Steel housing scale body, high-tension shackle and hook,
- Indicator packed in portable box, easy to operate outdoors.
- Internal clock and calendar
- Weighing data save protection in case of power off.
- keyboard calibration, easy to operate.
- Power saving mode, turn off automatically after 1 hour with no operation.
- Gathering up to data records of 2000 weighings, records can be sorted, searched and printed.
- Micro-printer in indicator.



### Product Specification

Model	Capacity	Division	Number
HW-1	1000	0.5	2000
HW-2	2000	1	2000
HW-3	3000	1	3000
HW-5	5000	2	2500
HW-10	10000	5	2000
HW-15	15000	5	3000
HW-20	20000	10	2000
HW-30	30000	10	3000





Our excellent international sales team will be glad to source load cells, indicators, weights or any other products from China for you. We will try to offer you the best price and best service we can.





## Changzhou Lilang Electronic Co., Ltd.

Add: Luoyang Industrial Area, Luoyang Town, Changzhou, Jiangsu, China

Cel: 0086-13861030764

Tel: 0086-519-89615132

Fax: 0086-519-89615130

Post code: 213104

Website: [www.lilascale.com](http://www.lilascale.com)

<http://lilascale.en.alibaba.com>

E-mail:

International sales: [sales@lilascale.com](mailto:sales@lilascale.com)

Contact: Stone Sun